



# **FREESTANDING BATHTUBS**

## **Installation Instruction**

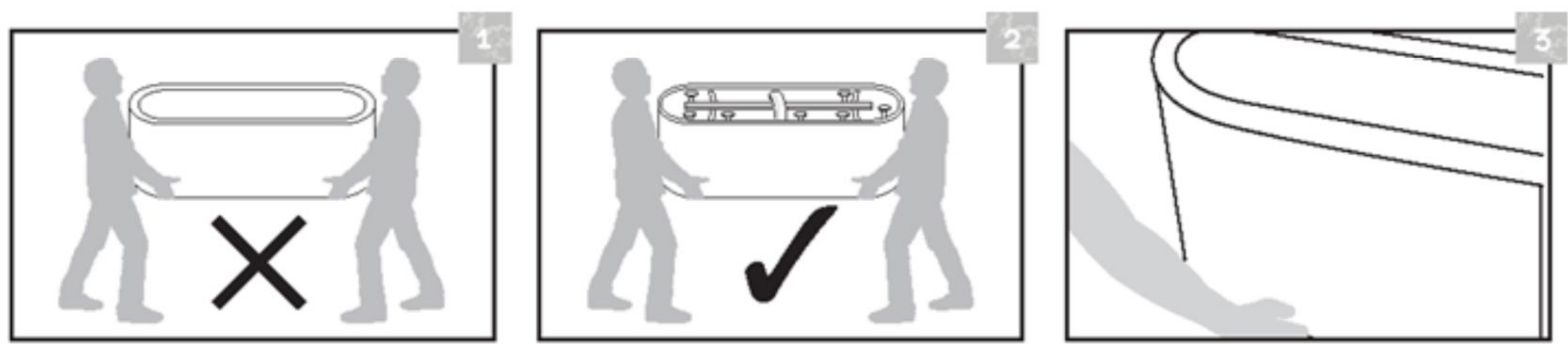


# FREESTANDING BATHTUB INSTALLATION PROCEDURE

## Before you start:

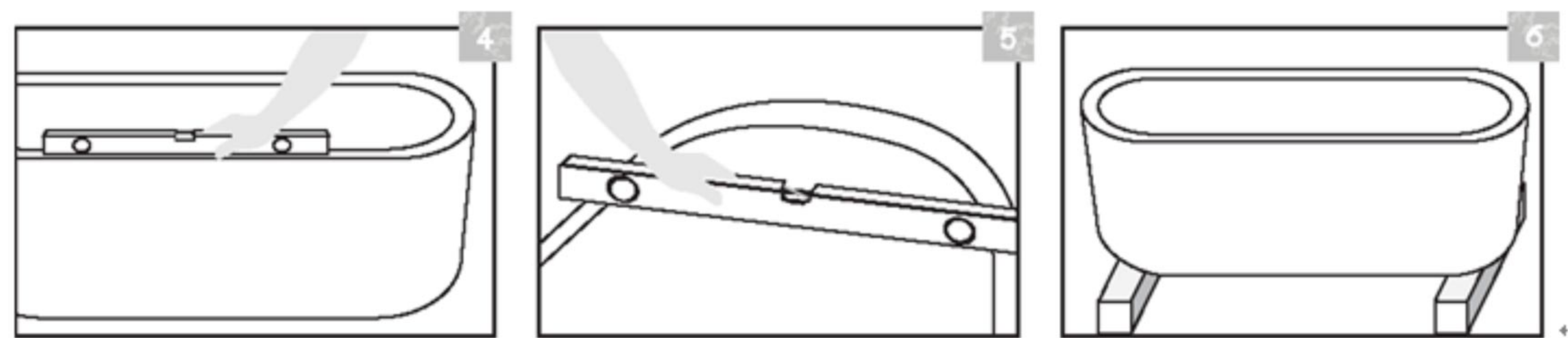
- Ensure that the floor is even.
- The water-overflow fitting is supplied with the product, however other accessories like the slip joint and adaptors are not included and must be purchased separately.
- Because of the technical features of the product, it should be used only with the supplied waste-overflow or specific 3rd party models that have been tested and approved by us.
- Handgrip application for our product is not available.
- The bathtub must be carried in the upside-down position. Do not lift or support the bathtub by the panels.
- Place the bathtub by raising it up 3½” with 4x4 pieces of lumber so you can have access from the bottom of the bathtub.
- For cleaning of the acrylic bathtub look at our Acrylic Bathtub Maintenance Manual.

## INSTALLATION SEQUENCE:



**Picture 1-2:** the bathtub must be carried upside-down. It must never be carried by its panel.

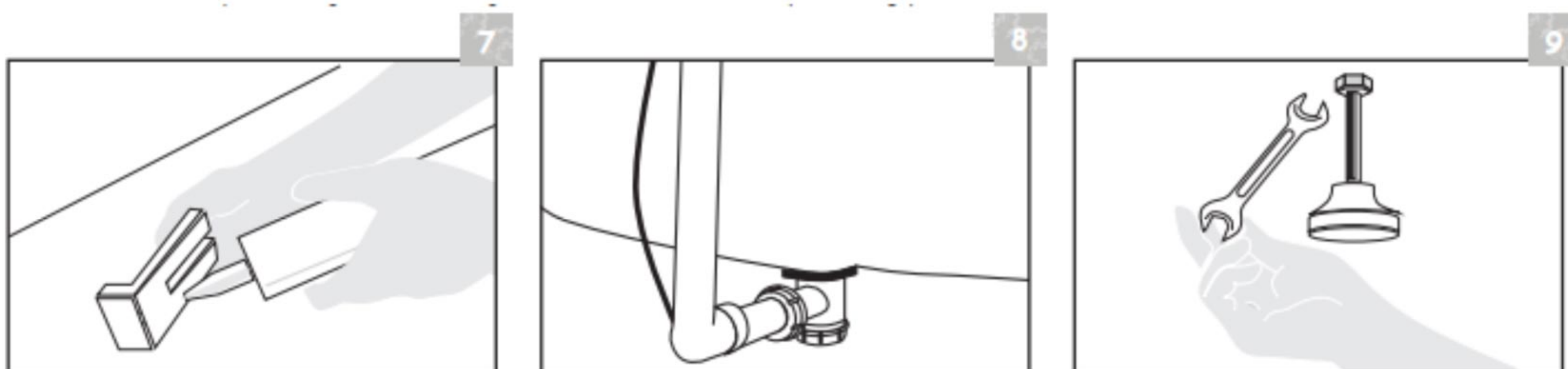
**Picture 3:** the waste-overflow fitting is pre-installed with the bathtub at the factory. The corrugated extender must be removed and discarded unless there is absolutely no other way to complete the installation. The waste pipe/P-trap connection must be made directly to waste/drain outlet located at the bottom of the tub.



**Picture 4-5:** the bathtub is leveled via a water level at the intended local installation area.

**Picture 6:** place the bathtub by raising it up 3½” with 4x4 pieces of lumber so you can have access from the bottom of the bathtub, Important note: during the installation, the bathtub should not be turned on its side to prevent its weight from deflecting its Monobloc sides. This is why it is important to use supports to raise the bathtub above the floor. This will also provide you with easy access to the internal plumbing parts.





**Picture 7:** the Monobloc side of the bathtub touching the floor should be marked.

**Picture 8:** the water outlet pipe should be connected.

**Picture 9:** foot leveling lock nuts are adjusted.

### Maintenance Help:

Prodigg European Designs warrants to the original consumer purchaser that it will, at its repair or replace this bathtub or any of its parts in its sole judgment, to be defective under normal residential use and maintenance so long as it is owned by the original consumer purchaser.

THIS WARRANTY SHALL BE VOID IF THE ACCESS PANEL TO THE BATHTUB IS COVERED IN ANY MANNER CONTRARY TO THE INSTALLATION INSTRUCTIONS.

This limited warranty DOES NOT COVER the following:

1. Defect or damages arising from shipping, installation, alterations, accidents, abuse, misuse, lack of proper maintenance and cleaning as directed in the Bathtub Operating and User Maintenance Instruction Manual and use of other than Prodigg European Designs replacement parts, in all cases whether caused by a plumbing contractor, service company, the owner or any other person.
2. Deterioration through normal wear and tear and the expense of normal maintenance.
3. Commercial application.
4. Prodigg European Designs' limited warranty on these items is one year for parts only and excludes labor. This one year limited warranty covers accessories (e.g. acrylic surface, drains, overflows) against defects of material or workmanship. Warranty coverage begins on the date the accessory was originally purchased by the owner.